

GEL DOCUMENTATION SYSTEM



CONTACT US

info@igenels.com
www.igenels.com

ABOUT THE COMPANY

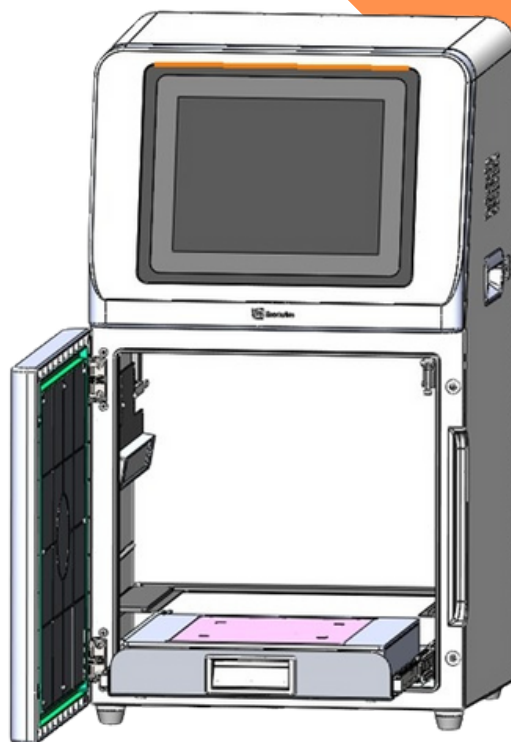
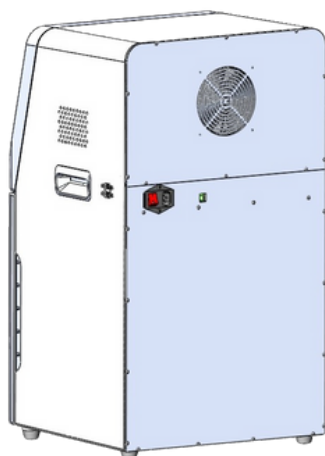
iGene Labserve Pvt. Ltd. is gaining recognition by offering resilient, innovative solutions in laboratory instrumentation across healthcare, genomics, drug discovery, biopharma, and food & beverage sectors. We strive to enhance lab efficacy and reduce challenges through advanced technologies and a diverse product portfolio tailored to our customers' needs.

IG-618GD TOUCH

IG-618GD Touch is a device for imaging detection and analysis of gels, equipped with a high sensitivity 6.3-megapixel camera for rapid, accurate, and high-throughput detection and imaging of samples. It is widely used in the fields of life sciences, medicine, and environmental protection.

1D ANALYSIS SOFTWARE

- Analyse gel images from any source
- Automatic lane and band detection
- With full manual control over adding, modifying, and deleting lanes and bands.
- Fix run distortions through Re-calibration.
- Define any number of absolute Rf curves on the image to correct run distortions.
- Define and subtract profile background.
- Use the built in automatic methods or define background manually.



TECHNICAL SPECIFICATIONS:

Pixel Resolution: 6.3 million pixels (3072 x 2048)

Pixel Size: 2.4 x 2.4 μm

Exposure Time: 17 μs – 15 s

Focal Length: 8-48mm

Grayscale: 16-bit (256 levels)

Field of View: 220 x 220 mm

Operating System: Windows OS, 10.4-inch display (1024 x 768 resolution)

External Interfaces: USB 3.0 x 2

Operating Voltage: 100V-240V

Power Consumption: 200W

Net Weight: 27kg

1D Image analysis: 1D image analysis and capture software.

KEY FEATURES:

HIGH-RESOLUTION CAMERA:

6.3 Megapixels CMOS camera with 3072x2048 pixel resolution for clear, precise images.

Pixel Size: 2.4 x 2.4 μm for high sensitivity, enabling detection of weak signals.

Black and White Camera: Allows for precise grayscale imaging with a 16-bit depth (256 levels).

Wide Exposure Range: Adjustable from 17 μs to 15s to cater to various sample types.

OPTICAL SYSTEM:

Motorized Zoom Lens: Focal length adjustable between 8-48mm, with aperture settings from F1.0 to F16 for customizable imaging based on your needs.

ILLUMINATION:

Bright Field Light Source: Symmetrically distributed downward-facing LED lights provide even, consistent illumination.

UV Light Source: 302nm LED array for uniform transmission illumination.

DARK BOX:

Fully sealed dark box to isolate environmental light for enhanced image clarity.

Safety Features: The UV light source turns off automatically when the door is opened, ensuring user safety.

GEL CUTTING:

UV light source can be pulled out for gel cutting with a UV protection shield, ensuring precise and safe gel manipulation.

FIELD OF VIEW:

Effective field of view of 220 x 220 mm, ideal for various gel sizes and types.

SOFTWARE AND IMAGE PROCESSING:

Camera Settings: Easily adjustable parameters for contrast, exposure time, and gain to suit different sample needs.

Lens Adjustment: Multiple adjustment options (coarse, fine, super-fine) for zoom, focus, and aperture control.

Image Cropping: Users can crop images to focus on specific bands, ensuring accurate analysis.

Annotation Tools: The intuitive image tool interface includes manipulation and annotation tools for documentation purposes.

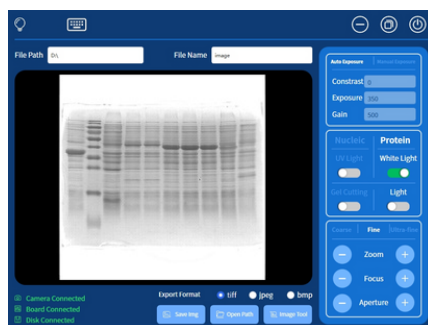
BUILD QUALITY:

Constructed with a high-grade metallic frame for durability and long-term use.

Drawer-type UV Transilluminator for easy sample placement and removal, designed with user safety in mind.



NUCLEIC ACID GEL



PROTEIN GEL



iGENE LABSERVE®
Innovative • Interactive • Intuitive



**CONNECT
WITH US.**

 **ADDRESS**

16/2, BLOCK 16, ASHOK NAGAR,
NEW DELHI-110018

 **TELEPHONE**

+91 11 79613060

 **EMAIL**

info@igenels.com

 **WEBSITE**

<https://www.igenels.com>



GeM
Government
e Marketplace



एन एस आई सी
NSIC
ISO 9001 : 2008

