

IG-1VC

CENTRIFUGAL CONCENTRATOR



The "IG-1VC Centrifugal Concentrator" is engineered with a customer-centric focus, adhering to ergonomic principles. It features an intuitive user interface and robust construction. The advanced heating technology guarantees rapid and secure concentration of DNA/RNA, oligonucleotides, proteins, and other liquid samples.

Features

- ◆ **Space-Saving Design**
 - Small volume with large capacity, with a width of only 28cm.
- ◆ **Corrosion-Resistance**
 - The centrifuge chamber is treated with a Teflon coating for enhanced corrosion resistance.
 - Teflon material is used for the all gas contact parts.
- ◆ **User-Friendly Operation**
 - Incorporates a one-button start/stop function to prevent accidental operation.
- ◆ **Safety Features**
 - **Exhaust Gas Evacuation:** Exhaust gas automatically vented after the operation is completed.
 - **Temperature quick settings:** Room temperature, 30°C, 45°C, 60°C, ensuring safe and efficient sample concentration

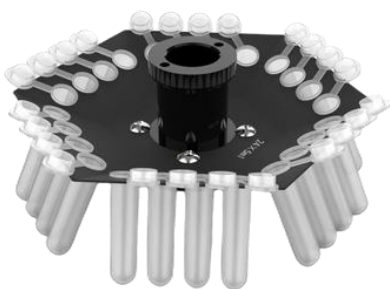
Specifications

- Speed Range: 1800 rpm
- Maximum Centrifugal Force. 380 × g
- Time Range: 0 to 9999 minutes
- Temperature Control Range: RT +5°C to 70°C
- Temperature Control Accuracy: ± 1°C
- Standard Rotor: 66*1.5ml tubes
- Maximum Capacity: 132*1.5ml | 24 *5ml | 10*15ml
- Noise Level: Not exceeding 60 dB(A)
- Machine Power: 660 W
- Power Supply: AC 220V, 50Hz/60Hz, 10A
- Dimensions (L × D × H): 350 × 280 × 290 mm
- Weight: 18kg without pump

Accessories



66*1.5ml



24*5ml



10*15ml



Diaphragm vacuum pump
Ultimate Vacuum 8mbar
Low Noise
PTFE Coated Head
Pumping speed at 1 ATM: 35L/min
Ultimate Vacuum Value: ≤8mbar(800pa)
Inlet and outlet connectors: 8mm Tower
Voltage: 220V/50Hz
Noise (Under Ultimate vacuum): ≤50dB
Power: 200W
Weight: 9.2kg
Size(L*W*H)(mm): 266*163*257