

LYOPHILIZERS

IG-LZ SERIES



CONTACT US

info@igenels.com
www.igenels.com

ABOUT THE COMPANY

iGene Labserve Pvt. Ltd. is gaining recognition by offering resilient, innovative solutions in laboratory instrumentation across healthcare, genomics, drug discovery, biopharma, and food & beverage sectors. We strive to enhance lab efficacy and reduce challenges through advanced technologies and a diverse product portfolio tailored to our customers' needs.

IG-LZ SERIES LYOPHILIZERS

iGene Laboratory freeze dryers are versatile and widely utilized across various fields, including medicine, pharmaceuticals, biological research, chemical industries, and food production. These advanced devices enable long-term preservation of materials by employing cutting-edge vacuum freeze-drying technology, also known as sublimation drying.

During the freeze-drying process, samples are first frozen and then subjected to sublimation under vacuum conditions, allowing moisture to be removed while preserving the integrity of the material. This ensures that materials can be easily rehydrated to their original state while retaining their chemical and biological characteristics.

iGene freeze dryers are designed to deliver precision, reliability, and efficiency, making them indispensable for applications requiring high-quality preservation and restoration.

KEY FEATURES

- **Compact Bench-top Design:** Perfect for bulk drying while saving space, making it ideal for any lab setup.
- **User-Friendly Control Panel:** All controls are in clear English, ensuring effortless operation.
- **Dual Vacuum Display:** Monitor vacuum levels in either Pa or Mbar for precision in every process.
- **Advanced Condenser Technology:** Captures ice uniformly and efficiently, ensuring consistent results every time.
- **Crystal-Clear Acrylic Chamber:** Durable and transparent, offering easy visibility of your samples during the drying process.
- **Streamlined, Compact Build:** Designed for convenience and ease-of-use, with a small footprint that doesn't compromise on performance.
- **Powerful Vacuum Pump:** Achieves optimal vacuum levels with high-speed pumping, ensuring faster drying cycles.
- **Innovative Condenser Design:** The large-opening condenser with external cooling tubes enhances performance and pre-freezing functionality.
- **Intuitive LCD Touch Screen:** The advanced colour LCD touch screen provides real-time visualisation of critical operational parameters, including running time, sample temperature, condenser temperature and vacuum level.
- **Smart Data Tracking:** Keep an eye on temperature and vacuum curves, with a USB port for easy data export to Excel, streamlining your record-keeping.
- **Eco-Friendly CFC-Free Refrigerant:** Equipped with a high-efficiency, low-noise compressor from a globally recognized brand.
- **Premium Stainless-Steel Valves:** Anti-corrosive and leak-proof, ensuring smooth, reliable operation.
- **Condensing Chamber and Cooling Coil:** The condensing chamber and cooling coil are constructed from high-grade SS304/SS316, ensuring durability and resistance to harsh chemicals and acidic environments.

TECHNICAL SPECIFICATION:

Models	IG-LZ10S	IG-LZ10SM	IG-LZ10T	IG-LZ10PT
Type	Standard chamber	Standard Chamber with 8 manifolds	TOP Press	TOP Press with standard chamber
Freeze drying area	0.12 m ²			
Ice Condenser capacity	3-4 kg /24h			
Condenser temperature	-50°C /-80°C			
Final vacuum	< 10 Pa			
Tray	Φ200 mm,4 layers, Spacing 70 mm			
Bulk capacity	1.2 L, 10 mm thickness			
Vial capacity Φ12mm	820 pcs			
Vial capacity Φ16mm	460 pcs			
Vial capacity Φ22mm	244 pcs			
Condenser size	Φ215 mm, 140 mm deep			
Drying chamber size	Φ260 × 430 mm			
Vacuum Pump Flow Rate	2 L/S, 7.2 m ³ /h			
Defrosting	Electric Defrosting			
Cooling	Air cooling, ambient temperature ≤28°C			
Voltage	220V /50 Hz, single phase			
Power	970 W (-50°C) /1400 W (-80°C)			
Dimension	610 x 450 x (370+430) mm (-50°C) 850 x 680 x (400+430) mm (-80°C)			
weight	70 kg (-50°C) 130 kg (-80°C)			

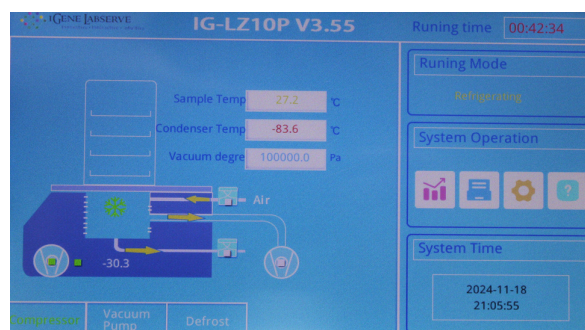
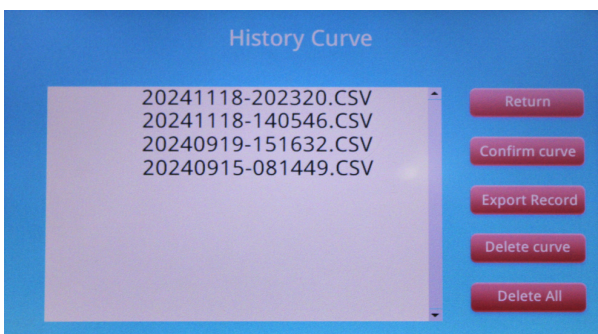
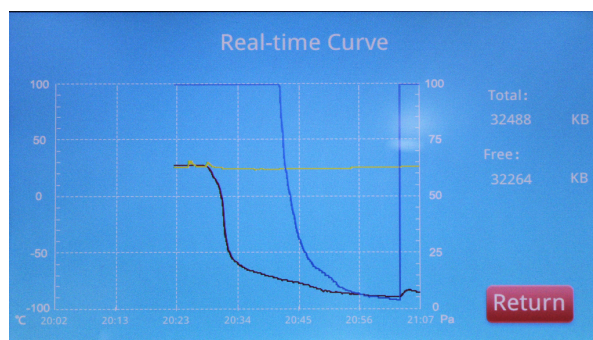
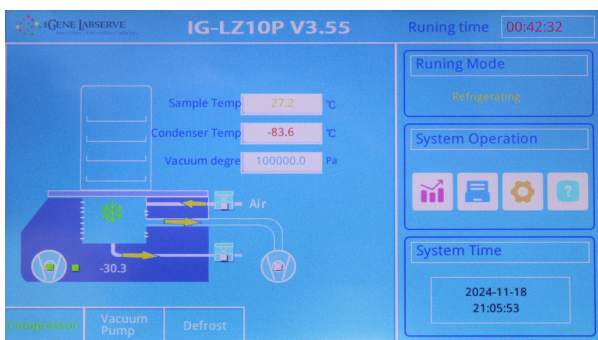
OPTIONAL FEATURES:

• Stainless steel PTFE-coated collector coil
• Condenser temperature: -110°C
• Moisture sensor
• Vacuum control valve
• High-quality corrosion-resistant vacuum pump
• Stainless Steel Drying Chamber

ROTARY VAN VACUUM PUMP

Pumping speed: L/S		2
Ultimate Vacuum (Pa)	without gas ballast	$\leq 6 \times 10^{-2}$
	with gas ballast	≤ 1.33
Speed: RPM (50 Hz)		1400
Power required: KW		0.37
Oil capacity: L		0.10
Dimensions (L x B x H) mm		514 x 168 x 282 mm
Weight: Kg		20

Display





iGENE LABSERVE®
Innovative • Interactive • Intuitive



CONNECT WITH US.

 **ADDRESS**

16/2, BLOCK 16, ASHOK NAGAR,
NEW DELHI-110018

 **TELEPHONE**

+91 11 79613060

 **EMAIL**

info@igenels.com

 **WEBSITE**

<https://www.igenels.com>



GeM
Government
e Marketplace



एन एस आई सी
NSIC
ISO 9001 : 2008

