

CHEMILUMINESCENCE IMAGING SYSTEM



CONTACT US

info@igenels.com
www.igenels.com

ABOUT THE COMPANY

iGene Labserve Pvt. Ltd. is gaining recognition by offering resilient, innovative solutions in laboratory instrumentation across healthcare, genomics, drug discovery, biopharma, and food & beverage sectors. We strive to enhance lab efficacy and reduce challenges through advanced technologies and a diverse product portfolio tailored to our customers' needs.

PRODUCT OVERVIEW:

The Chemiluminescence Imaging System IG-16CIS features the latest detection technology and user-friendly software, providing gel documentation, visible light inspection, RGB fluorescence, and chemiluminescence imaging applications. Equipped with a high-resolution, highly sensitive scientific-grade camera, it captures even the weakest signals under low illumination. Automatic controls and intuitive software enhance experimental efficiency by simplifying operation.

APPLICATIONS

Gel Inspection:

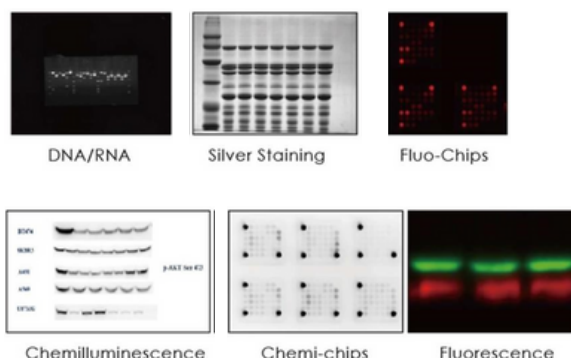
- Compatible with various fluorescent dyes, including Ethidium Bromide, SYBR™ Gold, SYBR™ Green, SYBR™ Safe, GelStar™, Fluorescein, and Texas Red.

Protein Inspection:

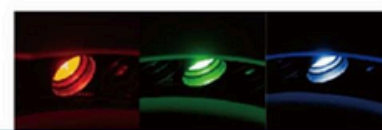
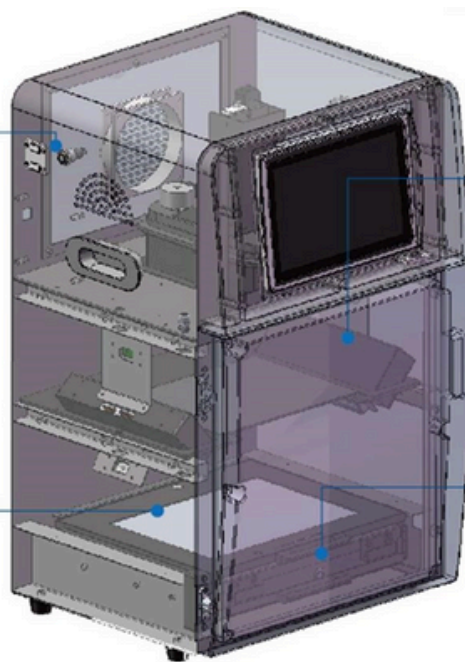
- Supports stains such as Coomassie Blue, Silver Staining, Sypro Red, Sypro Orange, Pro-Q Diamond, and Deep Purple.

Blotting Membrane:

- Suitable for Western Lighting, ECL, ECL Plus, CDP Star, Supersignal, CSPD, LumiGlo, Cy2, Cy3, Cy5, FITC, Alexa Dyes, DyLight dyes, Pro-Q Diamond, Pro-Q Emerald, IR Dye 680, and more.



The magnetic thimble interfaces realize free switching between the blue light and white light transmission. The touchable brightness adjustment switch facilitates the gel observation and recovery.



Multi-fluorescence module

Realized the multi-channel fluorescence photography from UV, visible light to near infrared.



UV SMART™ transilluminator

Compared with the traditional UV transilluminator, the "non-lamp" design of UV Smart™ provides uniform transmission and better background.

FEATURES

RIM MOULD CONSTRUCTION

The front panel and door are crafted using environmentally friendly reaction injection moulding, ensuring durability and sustainability.

EASY UPGRADATION

- UV transmission
- UV + Blue light transmission
- UV + Blue + White light transmission
- UV + Blue + White transmission with RGB reflection

SWITCHABLE OPERATION MODE

Easily switch between standalone PC operation and an embedded touch screen interface by pressing the "switch" button, offering seamless control.

BLUE AND WHITE LIGHT ILLUMINATOR

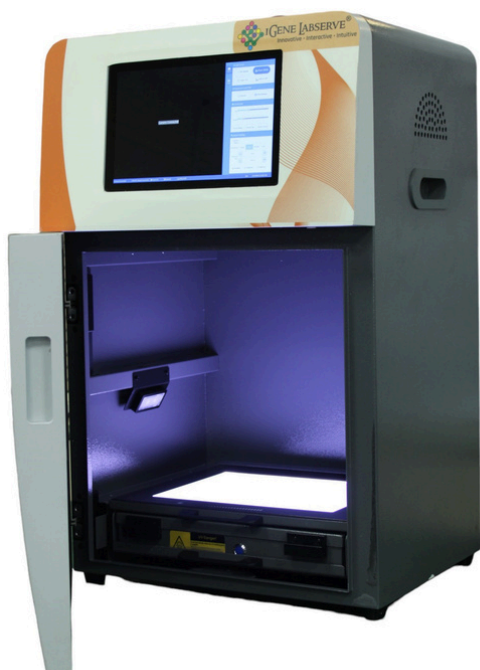
Equipped with a magnetic thimble interface for effortless switching between blue light and white light transmission. A touch-sensitive brightness adjustment switch enhances gel observation and recovery efficiency.

SAMPLE TRAY

- Super Slim Blue LED Transilluminator (470nm)
- UVSmart™ UV Transilluminator (302nm)
- Super Slim White LED Transilluminator

8 SOCKET FILTER WHEELS

Designed for versatile functionality, accommodating various filter requirements.



PARAMETER

IG-16CIS Chemiluminescence Imaging System
Scientific Cooled CCD Camera
CCD Sensor: 12.49mm x 9.9mm
Resolution: 6.05MP 2750 X 2200
Pixel Size: 4.54um x 4.54um
Pixel Density: 16bit (65536 Gray Scale)
Quantum Efficiency: >=75%
Absolute Cooling Temperature: -25 degree C
Motorized F 0.95 ultrafast Lens

MULTI-FLUORESCENCE LIGHT MODULE

EXCITATION LIGHT	FILTERS
UV Light Ex365	Em460/30F, for UV excited dye
Blue Light Ex470	Em460/31F, for blue light excited dye
Green Light Ex530	Em460/32F, for green light excited dye
Red Light Ex630	Em460/33F, for red light excited dye
Near infrared Ex660	Em460/34F, for NIR excited dye
Near infrared Ex770	Em460/35F, for NIR excited dye

ANALYSIS SOFTWARE

CHEMILUMINESCENCE CAPTURE

Effortlessly adjust focus, set exposure, and capture high-quality images with a single click.

INVERT COLOR OPTION

Switch seamlessly between black-and-white or white-and-black views with brightness adjustments for enhanced clarity.

DNA/RNA ANALYSIS

Perform comprehensive nucleic acid analysis using 1D software, featuring tools for molecular weight determination, densitometry, and more.

PROTEIN CAPTURE

Capture protein gels effortlessly by placing the LED transilluminator on the sample tray and selecting the dedicated protein module.

FLUORESCENCE CAPTURE

Simplify fluorescent imaging by selecting the desired excitation source—white, CY2, CY3, or CY5—via the Fluorescent module.

CORRECT RUN DISTORTION

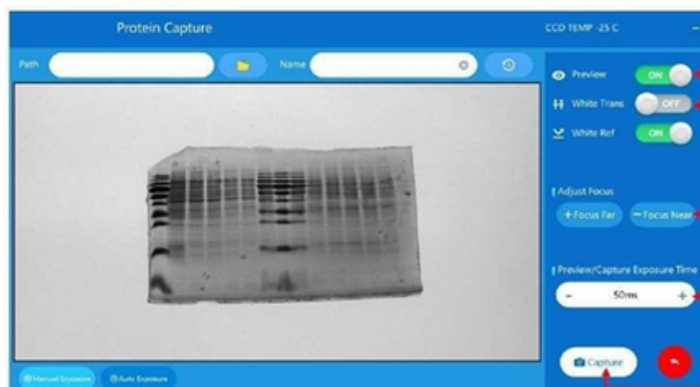
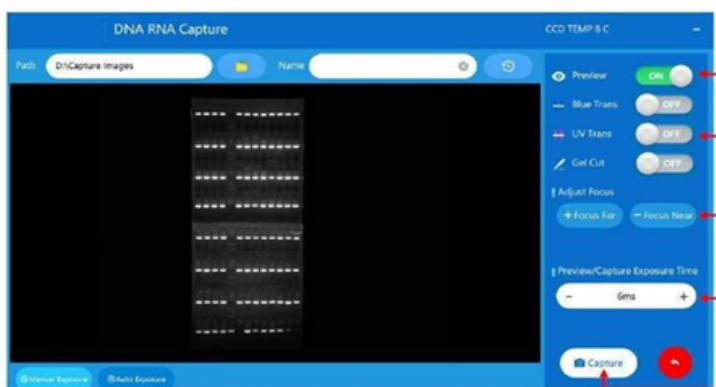
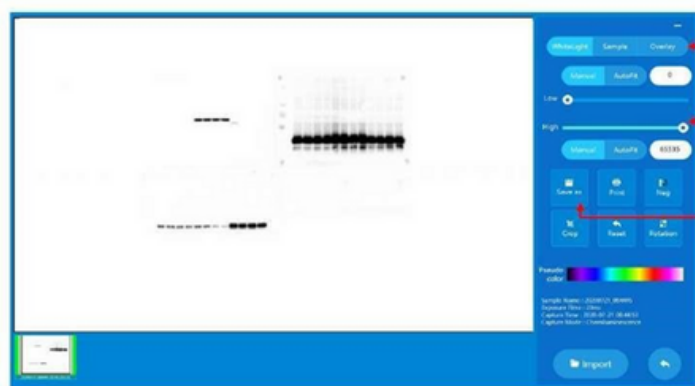
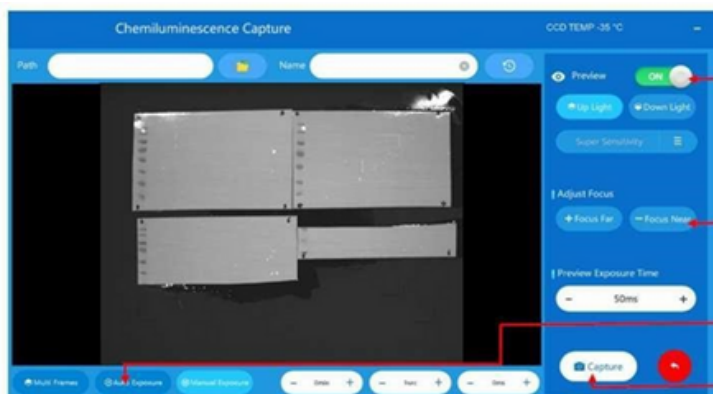
Fix gel run distortions with ease by defining absolute Rf curves and recalibrating directly within the software.

BACKGROUND SUBTRACTION

Use built-in automatic methods or manual tools to define and subtract profile backgrounds for precise data analysis.

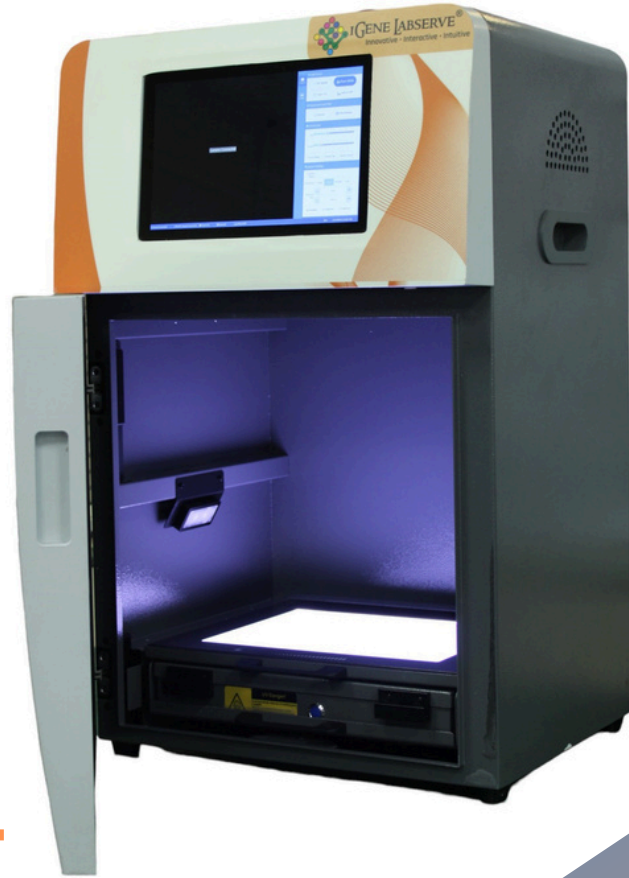
CROSS-PLATFORM COMPATIBILITY

Fully compatible with Windows, Linux, and macOS, ensuring smooth operation across all major operating systems.





iGENE LABSERVE®
Innovative • Interactive • Intuitive



CONNECT WITH US.

 **ADDRESS**

16/2, BLOCK 16, ASHOK NAGAR,
NEW DELHI-110018

 **TELEPHONE**

+91 11 79613060

 **EMAIL**

info@igenels.com

 **WEBSITE**

<https://www.igenels.com>



GeM
Government
e Marketplace



एन एस आई सी
NSIC
ISO 9001 : 2008

